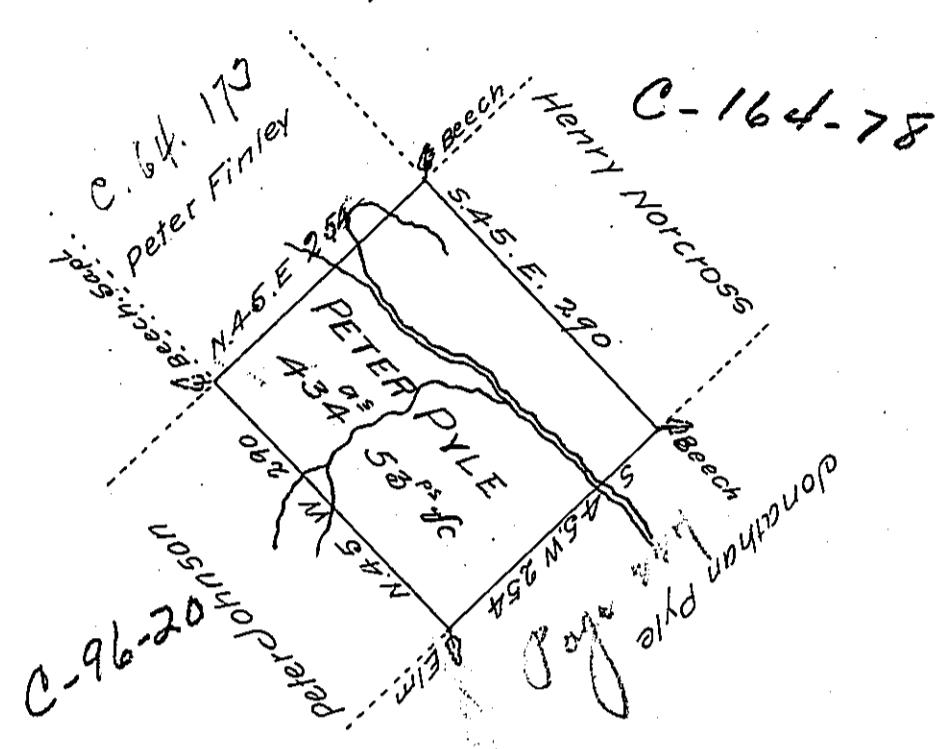


7-15-31



A Draught of a tract of land called \_\_\_\_\_ Situate in the County of Luzerne. Adjoining Jonathan Pyle & others. Surveyed the 27<sup>th</sup> day of Octbr. 1792 for Peter Pyle in pursuance of a Warrant bearing date 3<sup>d</sup> day of April 1792 - Containing Four hundred thirty four acres & Fifty three perches & the allowance of six pt. Cent &c.

Ant<sup>y</sup> Grothers D.S.

To

Dan<sup>l</sup> Brodhead Esq<sup>r</sup>  
Surveyor General

IN TESTIMONY that the above is a copy of the original remaining on file in the Department of Internal Affairs of Pennsylvania, made conformably to an Act of Assembly approved the 16th day of February, 1833, I have hereunto set my Hand and caused the Seal of said Department to be affixed at Harrisburg, this seventh day of August 1906

*Loac R. Brown*  
Secretary of Internal Affairs.